

Linear

TIMI R014 Fixture Guide

KKDÖ

Indoor | Surface | Output up to 1380lm/m (421lm/ft)

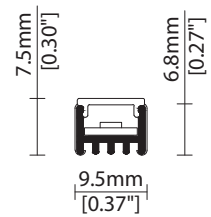


Key applications

- ✓ Architectural detail
- ✓ Backlighting & signage
- ✓ Cabinet & furniture
- ✓ Cove lighting
- ✓ Display case
- ✓ Indirect lighting
- ✓ Interior
- ✓ Mirror back lighting
- ✓ Retail display
- ✓ Shelving display

Key features

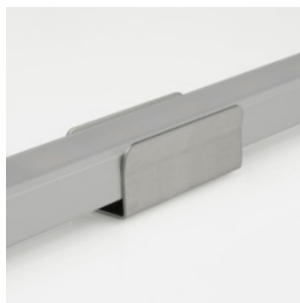
- ✓ Custom lengths
- ✓ Cutable (IP20)
- ✓ Constant Voltage (CV)
- ✓ Diffusion: semi-homogenous
- ✓ Extensive CCT range
- ✓ IP20 dry area
- ✓ Light on time (10 day delivery)
- ✓ Lens options



MOUNTING METHODS



KKCP-13 Lock clip



KKCP-01 Standard clip



KKCP-05 Lens lock clip



Inside lens accessory

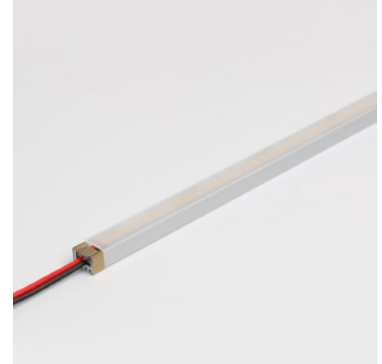
Linear

TIMI R014

Specification sheet



Dimensions	H6.8/W9.5/L97-2014mm (H0.27/W0.37/L3.81-79.29in) (Double tail) / H6.8/W9.5/L90-2007mm (H0.27/W0.37/L3.54-79.01in) (Single tail)
PCB Cut-point	41.7mm increment/2000mm max (1.64in increment/78.74in max)
LED Pitch	6.95mm-144LED/m (0.27in - 44LED/ft)
Chip	s-line k-line
Cover/Optics	No cover (120°) / Semi-diffused (100°) / Black (90°) / KKLN-01 lens (14° or 36°)
CCT	s-line: 1900K/2100K/2300K/2500K/2700K/3000K/3500K/4000K/5000K Single colours: Red/Green/Blue/Orange/Amber k-line: 1900K/2100K/2300K/2500K/2700K/3000K/3500K/4000K/5000K
LED binning	s-line: 2-step MacAdam ellipse k-line: 3-step MacAdam ellipse
CRI	≥92
Lifetime	50,000 hours @ 25°C (50,000 hours @ 77°F)
Operating temp	T _a = -25 to 45°C (T _c max = 78.6°C) T _a = -13 to 113°F (T _c max = 173.5°F)
IP Rating	IP20
Finish	Silver anodised
Mounting	Surface mounting via clips
Power feed	Hardwire tails or male/female connectors
Control	0-10V/1-10V/DMX/DALI



LED Grading Key

Exclusive Grade

s s-line*	*KKDC tuned CCT range
2-step CCT range	

Base Grade

k k-line	3-step commercial range Energy Star CCTs
-----------------	---

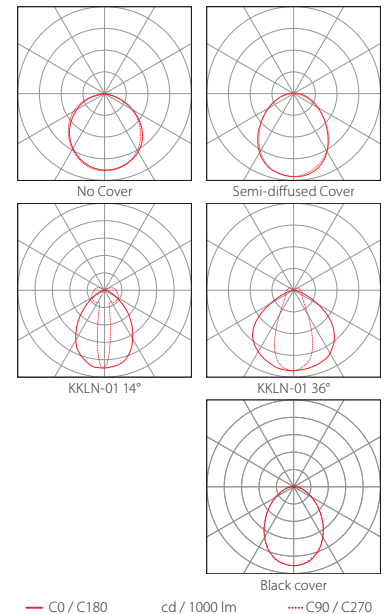
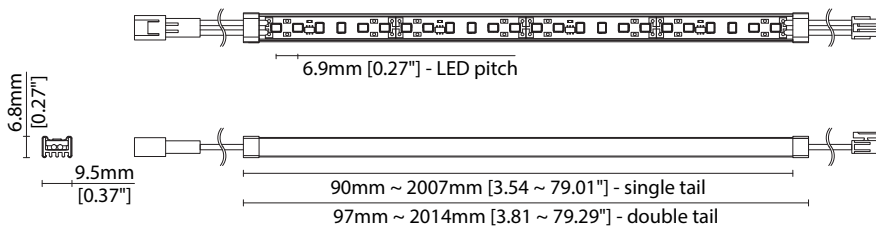
Power consumption	Supply voltage	Supply current
14W/m (4.27W/ft)	24V DC	0.58A/m (0.18A/ft)

Performance Data (3000K)

	R1	R2	R3	R4	R5	R6	R7	R8	R9	R10	R11	R12	R13	R14
k-line	92	96	97	90	92	94	91	82	63	91	90	74	94	98

	No Cover	Semi-diffused	14° (KKLN-01)	36° (KKLN-01)	Black cover	CRI	R9	Rf	Rg
s-line	1380lm/m (421lm/ft) 98.5lm/w	1158lm/m (353m/ft) 83lm/w	1232lm/m (375m/ft) 88lm/w	1190lm/m (363m/ft) 90lm/w	470lm/m (143m/ft) 35.6lm/w	93	64	-	-
k-line	1302lm/m (397lm/ft) 93lm/w	1092lm/m (333m/ft) 78lm/w	1162lm/m (354lm/ft) 83lm/w	1190lm/m (362lm/ft) 85lm/w	470lm/m (143lm/ft) 33.6lm/w	92	63	-	-

Male/Female connector



Data derived from independent UKAS/IESNA LM-79-08 accredited testing of production samples.

FIXTURE

Model	Finish	Cover/Lens ¹	Grade ²	LED	Colour (CCT)	Length Availability ³	IP	Cable Length	Power Feed ⁴	Input
TIMI	TI	Silver Anodised SA	No cover ⁵ X	R014	1900K 19	m 97-2014mm ⁶ 90-2007mm ⁷ 83.3mm increments	IP20	50mm (1.97in) 0050	Single no sheath tail S00X	DC 24V g
			Semi-diffused ⁵ D		2100K 21	i 3.83-79.29in ⁶ 3.56-79.01in ⁷ 3.28in increments		300mm (11.81in) 0300	Double no sheath tail D00X	
			KKLN-01D (14°) ⁵ S		2300K 23				Single no sheath IP20 connector S20X	
			KKLN-01U (36°) ⁵ R		2500K 25				Double no sheath IP20 connector D20X	
			Black cover ⁵ Y		2700K 27					
					3000K 30					
					3500K 35					
					4000K 40					
					5000K 50					
					RED RED s-only					
					GREEN GRN					
					BLUE BLU					
					ORANGE ORN					
					AMBER AMB					

¹ Refer to **Cover/Lens Options** on **Options** pages ² Refer to **LED Grading Key** on **Specification sheet** page ³ Refer to **Length Availability List** or enter total run length instead of length code
⁴ Refer to **Power Feed Options** on **Options** pages ⁵ Operating temperatures vary for TIMI with cover and TIMI without cover; please check with a KKDC engineer if operating temperature is limiting product application
⁶ Double clamp TIMI length ⁷ Single clamp TIMI length

Code Example:

TI	-	SA	-	D	-	s	-	R014	-	35	-	m	500	-	20	-	0050	-	D20X	-	g
TIMI		Silver Anodised		Semi-diffused		s		R014		3500K		500mm		IP20		50mm (1.97in)		Double no sheath IP20 connector		DC 24V	

ACCESSORIES

Mounting Accessories

KKCP-01	Clip (1no.)
KKCP-51	Clip (500no.)
KKCP-13	Lock Clip
KKCP-05	Lens Lock Clip for KKLN-01 (1no.)
KKCP-55	Lens Lock Clip for KKLN-01 (500no.)

* Refer to **Mounting accessories** on **Accessories** pages

Connection Accessories

KKCN-01	2 PIN male & female 50mm (1.97in) pair
KKCN-03	2 PIN male & female 300mm (11.81in) pair
KKCN-06	2 PIN 300mm (11.81in) extension lead

* Refer to **Power feed** on **Accessories** pages

PSU/Driver

0-10V/1-10V/DALI/DMX

* Refer to **Driver/PSU Options** page for details or provide requirement and KKDC to offer the suitable option

LED ENGINE VARIANTS (LED STRIP TYPE)

Colour	LED	Lumen/m	Lumen/ft	W/m	W/ft	Spec Doc	Length	Increment
Single CCT	R007	680	207	7	2.13	TIMI R007	97-2014mm (3.81-79.29in)	41.7mm (1.64in)
	R014	1380	421	14	4.27	TIMI R014	97-2014mm (3.81-79.29in)	41.7mm (0.27in)
Warm Dim/Dynamic White	A010	1400	426	10	3.05	TIMI A010	91-2014mm (3.58-79.29in)	38.46mm (1.51in)
	A020	2800	853	20	6.10	TIMI A020	91-2014mm (3.58-79.29in)	38.46mm (1.51in)
RGB	R207	1476	450	16	4.88	TIMI R207	97-2014mm (3.81-79.29in)	83.3mm (0.55in)
	501	Red: 150 Green: 320 Blue: 50 RGB: 460	Red: 46 Green: 98 Blue: 15 RGB: 140	15.6	4.88	TIMI RGB	97-2014mm (3.81-79.29in)	83.3mm (3.28in)

* Performance data: A/s-line, no cover, 3000K

TIMI R014

Length Availability List



Length Code		Fixture Length ¹		LED Strip ²		End Cap Dimension		Wattage (W)	Output (lm)
Metric	Imperial(US)	Metric	Imperial(US)	Metric	Imperial(US)	Metric	Imperial(US)		3000K (Test Data)
m0097	i0004	97mm	3.83in	83mm	3.28in	N/A	N/A	1.17	106
m0139	i0005	139mm	5.47in	125mm	4.92in	N/A	N/A	1.75	159
m0181	i0007	181mm	7.11in	167mm	6.56in	N/A	N/A	2.33	212
m0222	i0009	222mm	8.75in	208mm	8.20in	N/A	N/A	2.92	265
m0264	i0010	264mm	10.39in	250mm	9.84in	N/A	N/A	3.50	318
m0306	i0012	306mm	12.03in	292mm	11.48in	N/A	N/A	4.08	372
m0347	i0014	347mm	13.67in	333mm	13.12in	N/A	N/A	4.67	425
m0389	i0015	389mm	15.31in	375mm	14.76in	N/A	N/A	5.25	478
m0431	i0017	431mm	16.96in	417mm	16.40in	N/A	N/A	5.83	531
m0472	i0019	472mm	18.60in	458mm	18.04in	N/A	N/A	6.42	584
m0514	i0020	514mm	20.24in	500mm	19.69in	N/A	N/A	7.00	637
m0556	i0022	556mm	21.88in	542mm	21.33in	N/A	N/A	7.58	690
m0597	i0024	597mm	23.52in	583mm	22.97in	N/A	N/A	8.17	743
m0639	i0025	639mm	25.16in	625mm	24.61in	N/A	N/A	8.75	796
m0681	i0027	681mm	26.80in	667mm	26.25in	N/A	N/A	9.33	849
m0722	i0028	722mm	28.44in	708mm	27.89in	N/A	N/A	9.92	902
m0764	i0030	764mm	30.08in	750mm	29.53in	N/A	N/A	10.50	955
m0806	i0032	806mm	31.72in	792mm	31.17in	N/A	N/A	11.08	1009
m0847	i0033	847mm	33.36in	833mm	32.81in	N/A	N/A	11.67	1062
m0889	i0035	889mm	35.00in	875mm	34.45in	N/A	N/A	12.25	1115
m0931	i0037	931mm	36.64in	917mm	36.09in	N/A	N/A	12.83	1168
m0972	i0038	972mm	38.28in	958mm	37.73in	N/A	N/A	13.42	1221
m1014	i0040	1014mm	39.92in	1000mm	39.37in	N/A	N/A	14.00	1274
m1056	i0042	1056mm	41.56in	1042mm	41.01in	N/A	N/A	14.58	1327
m1097	i0043	1097mm	43.20in	1083mm	42.65in	N/A	N/A	15.17	1380
m1139	i0045	1139mm	44.84in	1125mm	44.29in	N/A	N/A	15.75	1433
m1181	i0046	1181mm	46.48in	1167mm	45.93in	N/A	N/A	16.33	1486
m1222	i0048	1222mm	48.12in	1208mm	47.57in	N/A	N/A	16.92	1539
m1264	i0050	1264mm	49.76in	1250mm	49.21in	N/A	N/A	17.50	1592
m1306	i0051	1306mm	51.40in	1292mm	50.85in	N/A	N/A	18.08	1646
m1347	i0053	1347mm	53.04in	1333mm	52.49in	N/A	N/A	18.67	1699
m1389	i0055	1389mm	54.69in	1375mm	54.13in	N/A	N/A	19.25	1752
m1431	i0056	1431mm	56.33in	1417mm	55.77in	N/A	N/A	19.83	1805
m1472	i0058	1472mm	57.97in	1458mm	57.41in	N/A	N/A	20.42	1858
m1514	i0060	1514mm	59.61in	1500mm	59.06in	N/A	N/A	21.00	1911
m1556	i0061	1556mm	61.25in	1542mm	60.70in	N/A	N/A	21.58	1964
m1597	i0063	1597mm	62.89in	1583mm	62.34in	N/A	N/A	22.17	2017
m1639	i0065	1639mm	64.53in	1625mm	63.98in	N/A	N/A	22.75	2070
m1681	i0066	1681mm	66.17in	1667mm	65.62in	N/A	N/A	23.33	2123
m1722	i0068	1722mm	67.81in	1708mm	67.26in	N/A	N/A	23.92	2176
m1764	i0069	1764mm	69.45in	1750mm	68.90in	N/A	N/A	24.50	2229
m1806	i0071	1806mm	71.09in	1792mm	70.54in	N/A	N/A	25.08	2283
m1847	i0073	1847mm	72.73in	1833mm	72.18in	N/A	N/A	25.67	2336

TIMI R014

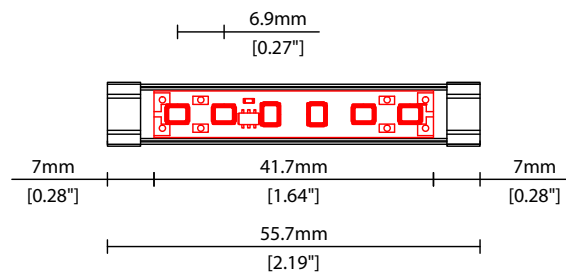
Length Availability List



Length Code		Fixture Length ¹		LED Strip ²		End Cap Dimension		Wattage (W)	Output (lm)
Metric	Imperial(US)	Metric	Imperial(US)	Metric	Imperial(US)	Metric	Imperial(US)		3000K (Test Data)
m1889	i0074	1889mm	74.37in	1875mm	73.82in	N/A	N/A	26.25	2389
m1931	i0076	1931mm	76.01in	1917mm	75.46in	N/A	N/A	26.83	2442
m1972	i0078	1972mm	77.65in	1958mm	77.10in	N/A	N/A	27.42	2495
m2014	i0079	2014mm	79.29in	2000mm	78.74in	N/A	N/A	28.00	2548

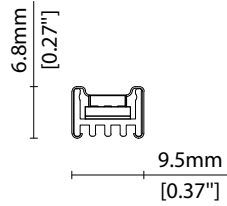
¹ Actual total overall length of light fixture (LED strip + end caps + void/wire hole)

² Actual length of PCB strip

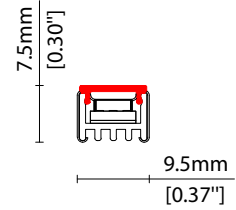


COVER/LENS OPTIONS

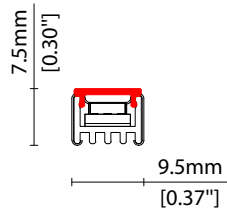
* Options are an integral part of the fixture ordering codes. Please refer to **Code Table** pages.



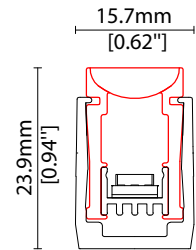
X No cover
W9.5/H6.8mm (W0.37/H0.27")



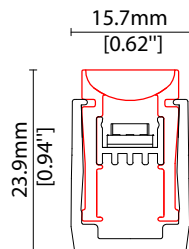
D Semi-diffused cover
Polycarbonate finish
W9.5/H7.5mm (W0.37/H0.30")



Y Black semi-diffused cover
Black translucent PMMA
25% light output
W9.5/H7.5mm (W0.37/H0.30")



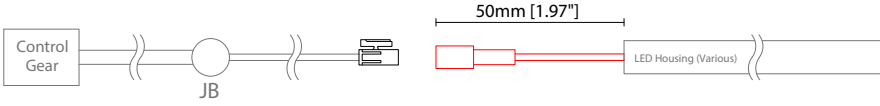
S 14° lens (KKLN-01D)
14° beam linear lens,
co-extruded PMMA
W12.8/H20mm (W0.5/H0.79")



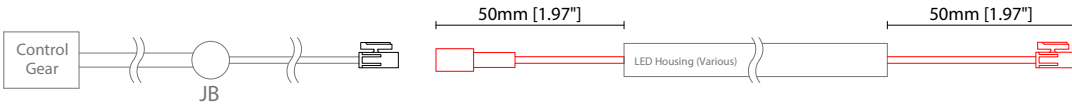
R 36° lens (KKLN-01U)
36° beam linear lens,
co-extruded PMMA
W12.8/H20.4mm (W0.5/H0.8")

POWER FEED OPTIONS

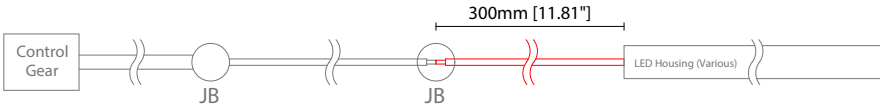
0050 S20X 50mm (1.97") Single no sheath IP20 connector



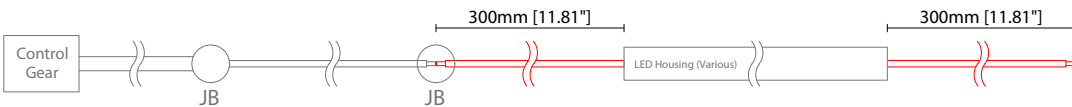
0050 D20X 50mm (1.97") Double no sheath IP20 connector



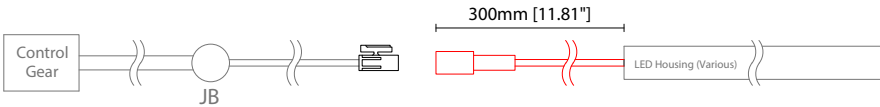
0300 S00X 300mm (11.81") Single no sheath tail



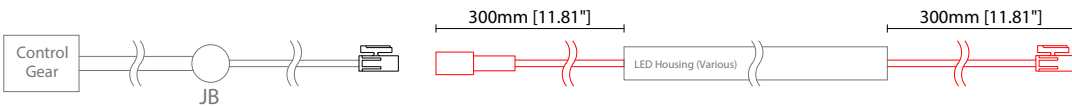
0300 D00X 300mm (11.81") Double no sheath tail



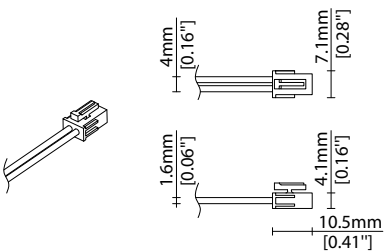
0300 S20X 300mm (11.81") Single no sheath IP20 connector



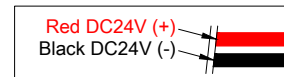
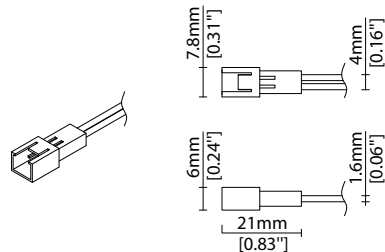
0300 D20X 300mm (11.81") Double no sheath IP20 connector



2 Pin Female Connector



2 Pin Male Connector

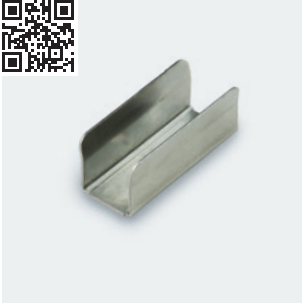


Key

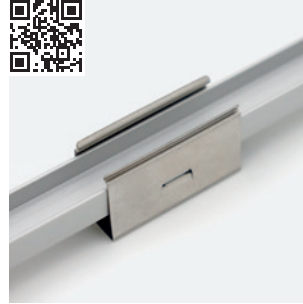
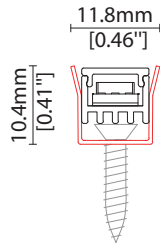
- Control Gear Power supply, sub-controllers & control systems
- JB Junction box / cable connection

MOUNTING ACCESSORIES

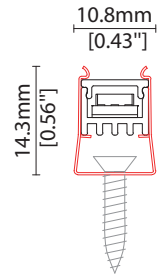
Note: Accessories are to be ordered separately with corresponding code shown below.



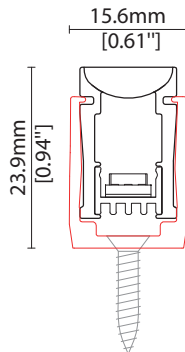
KKCP-01 (1no.)
KKCP-51 (500no.)
Clip (allow 3 per metre/40in)
S/Steel finish
L25/W11.8/H10.4mm
(L0.98/W0.46/H0.41")



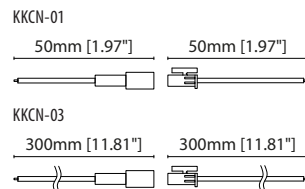
KKCP-13
Lock clip (allow 2 per metre/40in)
S/Steel finish
L25/W10.8/H14.5mm
(L0.98/W0.43/H0.57")



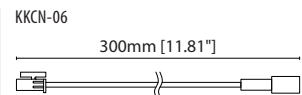
KKCP-05 (1no.)
KKCP-55 (500no.)
For use with KKLN-01 lens only
Lens lock clip (allow 3 per metre/40in)
Clear polycarbonate finish
L25/W15.6/H24mm
(L0.98/W0.61/H0.94")



POWER FEED



KKCN-01 50mm (1.97in) pair
KKCN-03 300mm (11.81in) pair
2 PIN male + female connector set



KKCN-06
2 PIN 300mm (11.81in) extension lead

KKDC CONTROL



IP20
Plastic housing
L170/W59/H29mm
(L6.69/W2.32/H1.14in)

KKDM-06 1-10V

visDIM dimmable sub-controller
(4 x 8A max @ 12-36V)



IP20
Plastic housing
L170/W53.4/H28mm
(L6.69/W2.10/H1.10in)

KKSC-05 DMX

visDIM dimmable sub-controller
(4 x 5A max @ 12-36V)



IP20
Plastic housing
L170/W59/H29mm
(L6.69/W2.32/H1.14in)

KKDL-02 DALI

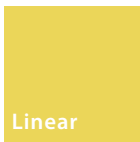
visDIM dimmable sub-controller
(4 x 8A max @ 12-36V)



IP20
Plastic housing
L166/W53.4/H23mm
(L6.54/W2.10/H0.91in)

KKDL-03 DALI

visDIM dimmable sub-controller
(4 x 5A max @ 12-36V)



TIMI

Driver/PSU Options



AVAILABLE PSU OPTIONS

Control Mode	PSU (Order Code)	Input Voltage AC	Output Voltage DC	Rated Output Current	Rated Power	Dim %	IP Rating
Switched	CEN-60-24	90-295V	24V	2.5A	60W	-	IP67
	HLG-60H-24	90-305V	24V	2.5A	60W	-	IP67
	HLG-100H-24	90-305V	24V	4.0A	100W	-	IP67
	HLG-150H-24	90-305V	24V	6.3A	150W	-	IP67
	HLG-240H-24	90-305V	24V	10A	240W	-	IP67
0-10V (1-10V)	PWM-40-24	90-305V	24V	1.67A	40W	100-0.15 (100-10)	IP67
	PWM-60-24	90-305V	24V	2.5A	60W	100-0.15 (100-10)	IP67
	PWM-90-24	90-305V	24V	3.67A	90W	100-0.15 (100-10)	IP67
	PWM-120-24	90-305V	24V	5.0A	120W	100-0.15 (100-10)	IP67
DALI	LIN100A1	120-277V	24V	1A per channel	100W	100-0.1	IP66/IP40
DMX RGB	LIN100A1	120-277V	24V	1.33A per channel	100W	100-0.1	IP66/IP40
DMX RGBW	LIN100A1	120-277A	24V	1A per channel	100W	100-0.1	IP66/IP40

Flicker Free Options - Combination of PSU+ sub-controller

Control Mode	PSU (Order Code)	Sub-controller (Order Code)	Input Voltage AC	Output Voltage DC	Rated Output Current	Rated Power	Dim %	IP Rating PSU/ Sub-controller
0-10V or 1-10V	CEN-60-24	KKDM-06	90-295V	24V	2.5A	60W	100-0.9	IP67/IP20
	HLG-60H-24	KKDM-06	90-295V	24V	2.5A	60W	100-0.9	IP67/IP20
	HLG-100H-24	KKDM-06	90-295V	24V	4.0A	100W	100-0.9	IP67/IP20
	HLG-150H-24	KKDM-06	90-295V	24V	6.3A	150W	100-0.9	IP67/IP20
	HLG-240H-24	KKDM-06	90-295V	24V	10.0A	240W	100-0.9	IP67/IP20
DALI	CEN-60-24	KKDL-02/03	90-295V	24V	2.5A	60W	100-0.1	IP67/IP20
	HLG-60H-24	KKDL-02/03	90-305V	24V	2.5A	60W	100-0.1	IP67/IP20
	HLG-100H-24	KKDL-02/03	90-305V	24V	4.0A	100W	100-0.1	IP67/IP20
	HLG-150H-24	KKDL-02/03	90-305V	24V	6.3A	150W	100-0.1	IP67/IP20
	HLG-240H-24	KKDL-02/03	90-305V	24V	10.0A	240W	100-0.1	IP67/IP20
DMX RGB	CEN-60-24	KKSC-05	90-295V	24V	2.5A	60W	100-0.9	IP67/IP20
	HLG-60H-24	KKSC-05	90-305V	24V	2.5A	60W	100-0.9	IP67/IP20
	HLG-100H-24	KKSC-05	90-305V	24V	4A	100W	100-0.9	IP67/IP20
	HLG-150H-24	KKSC-05	90-305V	24V	6.3A	150W	100-0.9	IP67/IP20
	HLG-240H-24	KKSC-05	90-305V	24V	10.0A	240W	100-0.9	IP67/IP20

¹ The items shown above cover the most frequently used specification but does not exhaust the possible options

² PSU and/or driver can be chosen from the table, or KKDC may recommend the best option upon receipt of the controls requirement and installation environment

³ Electrical shop drawing will include detailed information of PSU and relevant control drivers

⁴ Cut sheets are available on the controls section of www.kkdc.lighting or upon request